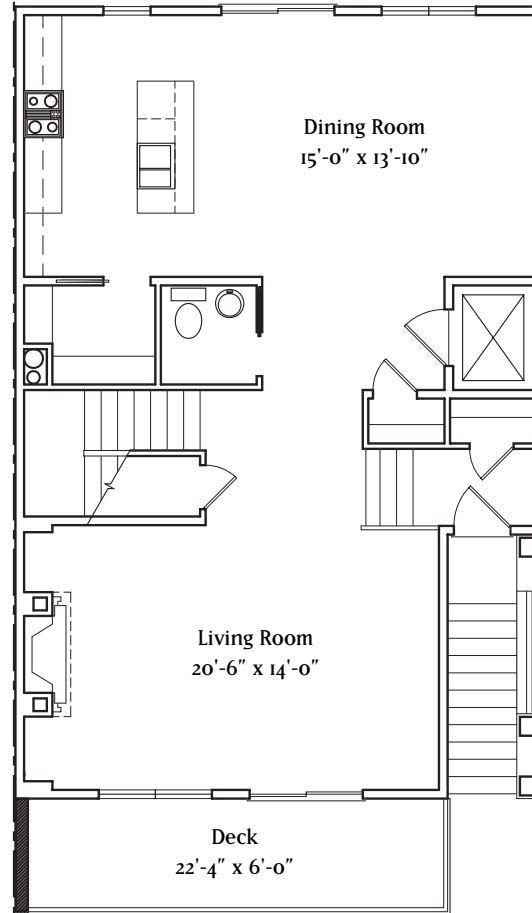
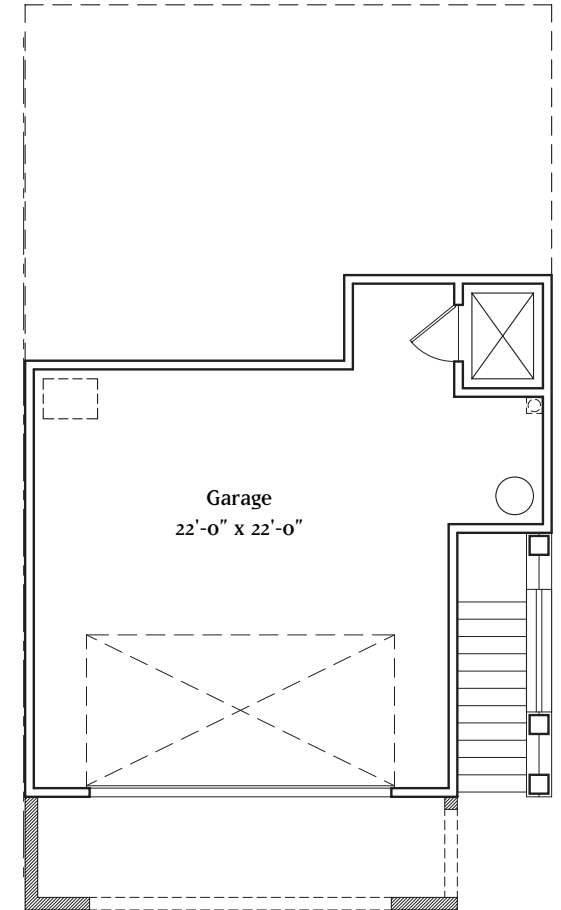


Upper Level 1,045 sq. ft.



Main Level 1,050 sq. ft.



Lower Level 594 sq. ft.

Upper level	1,049 sq. ft.
Main level	1,050 sq. ft.
Total Living	2,099 sq. ft.
Garage	594 sq. ft.
Gross Total	2,693 sq. ft.

Braedon Heights Townhomes: Building A/B Typical Plan

All information is deemed reliable as of publication date, but not guaranteed. Consult realtor for current specifications.

REALTY TRUST
GROUP, INC.

