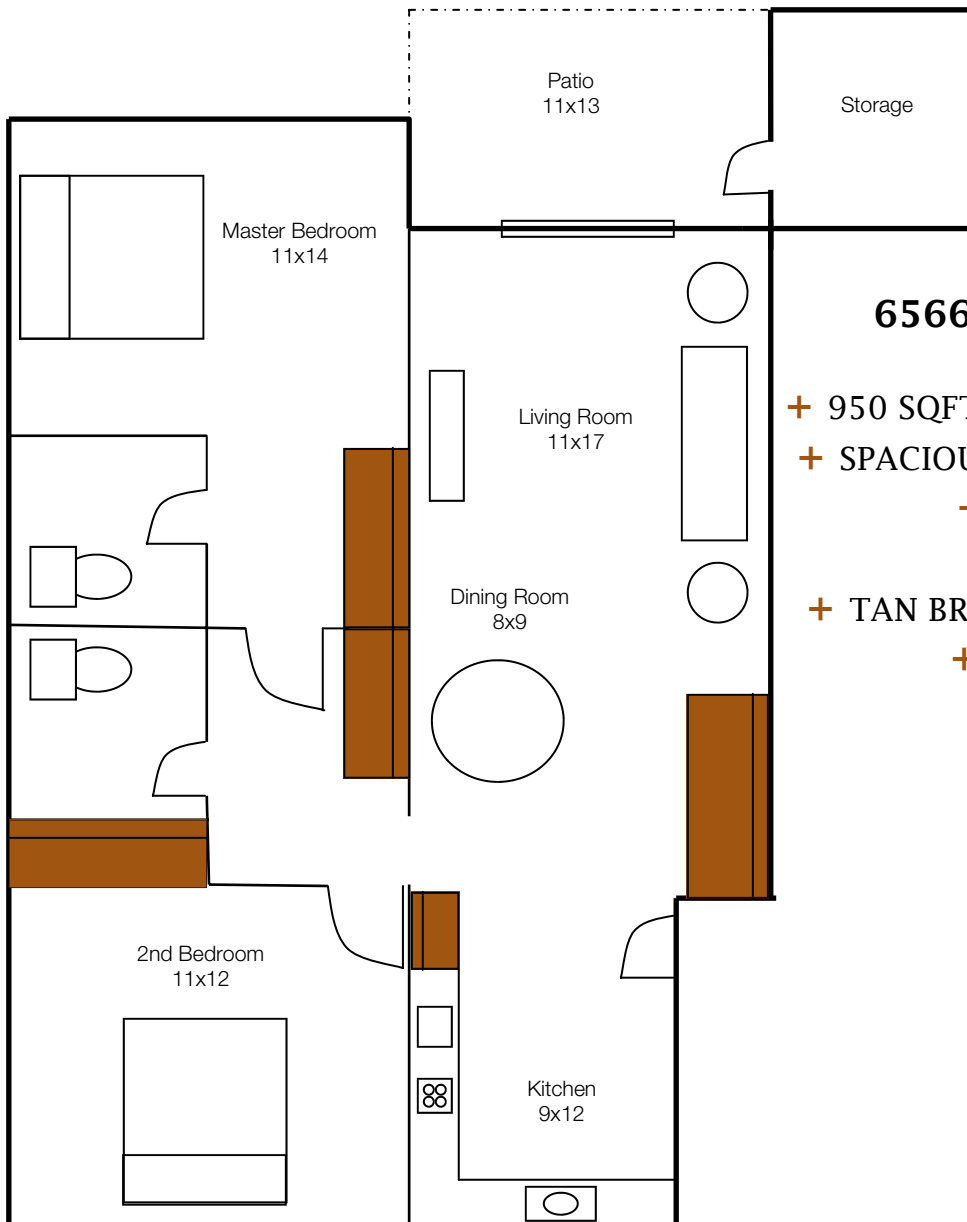


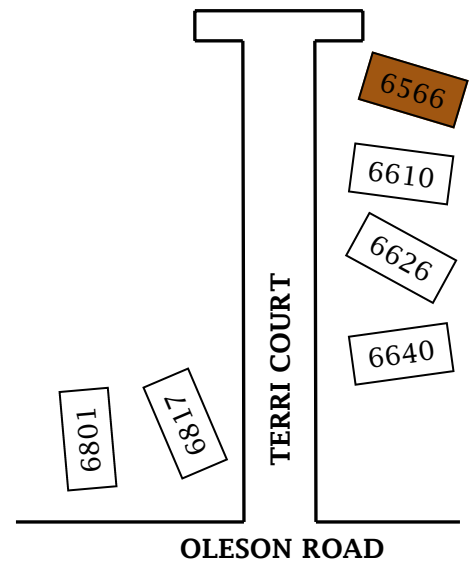
TERRI COURT

CONDOMINIUMS



The Dogwood 6566 SW TERRI COURT UNIT A 194,500

- + 950 SQFT, 2 BEDROOMS/ 2 BATHROOMS
- + SPACIOUS PATIO WITH STORAGE ROOM
- + ATTACHED GARAGE PARKING
- + OAK HARDWOOD FLOORING
- + TAN BROWN SLAB GRANITE COUNTERS
- + STAINLESS STEEL APPLIANCES
- + HOA- \$228 per month



Pricing and Availability Subject to Change
Square Footage & Rendering Drawings are Approximations

The Jackson Group

Becky Jackson | Kelly Majure | Sarah Norton
503-416-4177 | www.JacksonGroupPdx.com

REALTY TRUST
GROUP